



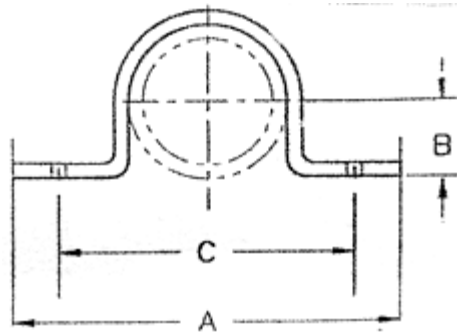
Stainless Steel Hold Down Clamp Figure 95

Service: Designed for supporting pipe runs from walls or ceilings.

Material:
304/316 Stainless steel and various alloys.

Ordering:
Specify figure number, pipe size in standard or ductile iron size.

Note:
Available in larger pipe diameters and in ductile iron size upon request



Pipe Size	Load Rating lbs	A	B	C	Hole Size	Stock Size
1/2	410	4-1/8	7/16	2-7/8	7/16	1/8x1-1/4
3/4	410	4-5/16	9/16	3-1/16	7/16	1/8x1-1/4
1	410	4-9/16	11/16	3-5/16	7/16	1/8x1-1/4
1-1/4	410	4-15/16	13/16	3-11/16	7/16	1/8x1-1/4
1-1/2	410	5-3/16	15/16	3-15/16	7/16	1/8x1-1/4
2	410	5-3/4	1-3/16	4-1/2	7/16	1/8x1-1/4
2-1/2	610	6-1/4	1-7/16	5	7/16	1/4x1-1/4
3	610	6-7/8	1-3/4	5-5/8	7/16	1/4x1-1/4
3-1/2	610	7-3/8	2	6-1/8	7/16	1/4x1-1/4
4	725	8-3/8	2-1/4	7-1/8	9/16	1/4x1-1/2
5	725	9-7/16	2-3/4	8-3/16	9/16	1/4x1-1/2
6	725	10-1/2	3-5/16	9-1/4	9-16	1/4x1-1/2
8	900	14	4-5/16	12	11/16	1/4x1-1/2

FM Stainless, LLC
 328 Maddox Drive Ellijay, GA 30540
 706-636-1881 Fax 706-636-1882
specs@fmstainless.com www.fmstainless.com