



Stainless Steel Two Rod Roller Hanger Figure 71

Service:

For suspension of pipe where horizontal movement may occur.

Material:

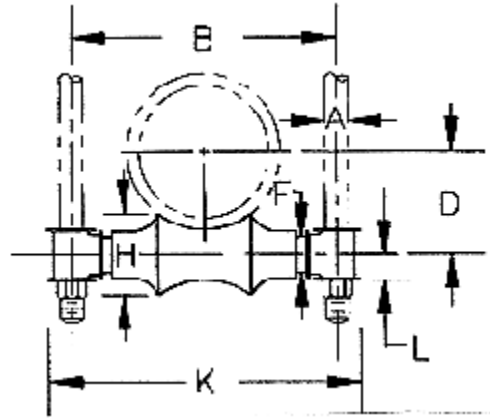
304/316 Stainless steel and various alloys.

Ordering:

Specify pipe size, standard or ductile iron and material specifications.

Note:

Roller and end socket configuration may differ from illustration.



Pipe Size	Max. recom. load, lb	Hanger Rod Size A	B	D	Roll Rod F	H	K	L
1	600	3/8	3	1	3/8	1	4-1/8	5/8
1-1/4	600	3/8	3-3/8	1-1/4	3/8	1	4-1/2	5/8
1-1/2	600	3/8	3-5/8	1-3/8	3/8	1-1/8	4-3/4	5/8
2	600	3/8	4-1/8	1-5/8	3/8	1-1/4	5-1/4	5/8
2-1/2	600	1/2	5-1/2	2	1/2	1-3/8	7	7/8
3	700	1/2	6-1/8	2-1/4	1/2	1-1/2	7-5/8	7/8
4	700	5/8	7-1/8	2-7/8	1/2	1-3/4	8-5/8	7/8
5	700	5/8	8-3/8	3-1/2	5/8	2	9-7/8	7/8
6	1000	3/4	9-5/8	4	3/4	2-3/8	11-3/8	1
7	1200	3/4	9-5/8	4-3/4	3/4	2-7/8	12-1/2	1
8	1300	7/8	12	5-1/8	7/8	2-3/4	14	1-1/8
10	1700	7/8	14-1/8	6-1/4	7/8	3-3/8	16	1-1/8
12	2400	7/8	16-1/8	7-1/2	7/8	4	18	1-1/8
14	3100	1	17-3/4	8-3/8	1	4-3/4	20	1-3/8
16	3900	1	19-7/8	9-1/2	1	5	22-1/8	1-3/8
18	4200	1	22-1/8	10-1/2	1	5-1/2	24-3/8	1-3/8
20	4500	1-1/4	24-1/8	11-5/8	1-1/4	6	26-5/8	1-1/2
24	6100	1-1/2	28-7/8	14	1-1/4	7-1/4	32-1/8	1-3/4
30	7200	1-1/2	35-1/2	17-1/2	1-1/4	9	39-7/8	2-1/8

FM Stainless, LLC
328 Maddox Drive Ellijay, GA 30540
706-636-1881 Fax 706-636-1882
specs@fmstainless.com www.fmstainless.com