



## Stainless Steel Clevis Hanger For Standard Pipe Figure 60

**Service:**

Recommended for the suspension of stationary pipelines Maximum Temperature: 650 °F

**Approvals:**

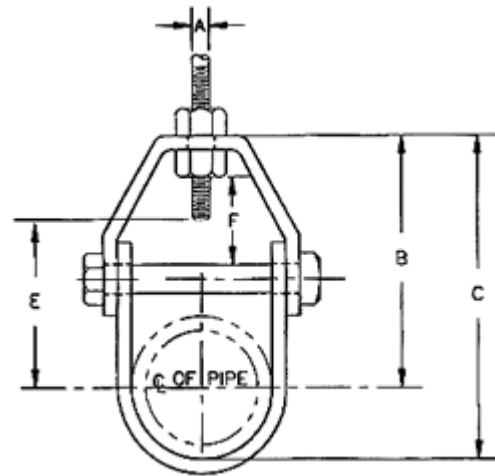
Complies with federal specifications WW-H-121 Latest Edition (Types and Manufacture's Standardization Society SP-69 (Type 1).

**Installation:**

Hanger load nut above clevis must be tightened securely to assure proper hanger performance. When an oversized clevis is used, a nipple should be placed over the clevis bolt as a spacer to assure that the lower u--strap will not move in on the bolt.

**Adjustment:**

Vertical adjustment without removing pipe may be made from 3/8 to 3-7/8 inches, varying with the size of clevis. Tighten upper nut after adjustment.



**Material:**

304/316 Stainless steel and various alloys.

Pipe Size	Max. recom. load, lb	Size of Steel		A	B	C	Rod Take Out E	Adjustment F
		upper	lower					
1/2	610	1/8x1	1/8x1	3/8	1-15/16	2-3/8	1-1/8	3/8
3/4	610	1/8x1	1/8x1	3/8	1-15/16	2-9/16	1-1/8	1/2
1	610	1/8x1	1/8x1	3/8	2-1/4	2-13/16	1-1/2	5/8
1-1/4	610	1/8x1	1/8x1	3/8	2-5/16	3-3/16	1-1/2	5/8
1-1/2	610	1/8x1	1/8x1	3/8	2-11/16	3-11/16	2	7/8
2	610	1/8x1	1/8x1	3/8	3-3/16	4-7/16	2-3/8	1-1/8
2-1/2	1130	1/8x1-1/4	1/8x1-1/4	1/2	3-7/8	5-3/8	3-3/16	1-7/16
3	1130	1/8x1-1/4	1/8x1-1/4	1/2	4-11/16	6-1/2	3-3/4	1-13/16
3-1/2	1130	1/8x1-1/4	1/8x1-1/4	1/2	4-15/16	7	4	1-13/16
4	1430	3/16x1-1/4	1/8x1-1/4	5/8	5-3/16	7-9/16	4-1/8	1-11/16
5	1430	3/16x1-1/4	1/8x1-1/4	5/8	6-1/16	8-15/16	5	1-7/8
6	1940	3/16x1-1/2	3/16x1-1/2	3/4	6-13/16	10-3/16	5-3/4	2
8	2000	1/4x1-1/2	3/16x1-1/2	3/4	8-1/8	12-1/2	6-7/8	2-1/16
10	3600	1/4x1-3/4	3/16x1-3/4	7/8	9-1/2	15	8	1-7/8
12	3800	3/8x2	1/4x2	7/8	11-1/8	17-5/8	9-1/2	2-3/16
14	4200	3/8x2	1/4x2	1	12-3/8	19-1/2	10-5/8	2-11/16
16	4600	1/2x2-1/2	1/2x2-1/2	1	13-13/16	21-15/16	12	2-3/4
18	4800	1/2x2-1/2	1/2x2-1/2	1	15-3/4	27-7/8	13-7/8	3-7/8
20	4800	1/2x3	1/2x3	1-1/4	17-3/8	27-1/2	15-1/4	3-7/8
24	4800	5/8x3	3/8x3	1-1/4	19-5/8	31-3/4	17-1/2	3-7/8
30	6000	3/4x3	3/8x3	1-1/4	24	39-1/8	21-3/4	4-7/8

**FM Stainless, LLC**

328 Maddox Drive Ellijay, GA 30540  
706-636-1881 Fax 706-636-1882

[specs@fmstainless.com](mailto:specs@fmstainless.com) [www.fmstainless.com](http://www.fmstainless.com)